



GMS PEPPER 4501

**Self-Propelled Self-Elevating
Jack-up Barge**

ABS A1, + PAS

Owner & Operator: Gulf Marine Services | Year of Build: 2014

Maintenance & Commissioning

Well Intervention

Heavy Lift & Decommissioning

Wind Turbine Installation & Maintenance

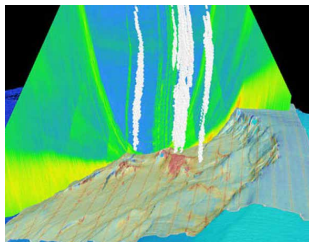


Chartering
chartering@gmsplc.com

STANDARD SPECIFICATIONS



BESPOKE OPTIONAL CAPABILITIES



**GEOTECHNICAL
& GEOPHYSICAL
SUPPORT**



**SPLASH ZONE /
SUBSEA**



DECK EXTENSION



**ADDITIONAL
PERMANENT LIVING
QUARTERS**

GMS PEPPER SPECIFICATIONS

Main Particulars		Leg design		Tank Capacities		Fire & Gas Detection System	
LOA	45 m	Leg Design	4 x Watertight Tubular Legs	Brine	up to 412 m ³	Fire Detection System	Consilium
Beam	36 m	Leg Length	76.9 m	Fresh Water	131 m ³ up to 328.8 m ³	Gas Detection System	Oldham
Depth	4.1 m	Max Water Depth	53.5 m	Fuel Oil	228 m ³ up to 645 m ³		
Max Draft (incl. spud cans)	4.3 m	Spud Can Area	35.6 m each	Ballast Water	360 m ³ up to 826 m ³		
GRT	3200 t			Lube Oil	7.66 m ³		
NRT	960 t			Dirty Oil	10.53 m ³		
Deck Area	800 m ²			Sewage	15.3 m ³		
Deck Loading	5 mt / m ²						

Deck Equipment		Propulsion & Generators		Accomodation	
Anchor	1 x Stockless Bower Anchor	Generator Sets	Caterpillar 4 x 800 kw	Single Cabins	7
Winches	40 x 80 KN	Emergency Generators	1 x 99 kw	2 Berth Cabins	34
Wire Capacity	32 mm, 4 x 400 m	Azimuth Thrusters	Rolls Royce, 2 x 900 kw	4 Berth Cabins	19
Cranes	Main: Huisman 75 t @ 20.7 m Aux: Pelegrini 25 t @ 25 m	Tunnel Thrusters	Rolls Royce, 2 x 350 kw	Total POB	150*
		Speed	4.5 Knots	Hospital	1
		Water Maker	Danfoss 2 x 45 t / day	Office Area	180 m ²
				*POB may be expanded using temporary accommodation units on deck and/or room configuration can be tailored to suit client requirements	

Jacking System		Safety Equipment		Helideck	
Jacking Units	16 x D 20 (NOV BLM)	Lifeboats	2 x 102 persons	Classification	Cap 437
Jacking Speed	0.65 m / min	Liferafts	8 x 39 persons	Aircraft	Bell 212 Bell 412 Augusta AW 139
Jetting System	Fitted	CO ₂ System	Engine & Galley & Emergency Gen. Room	Fire Fighting System	AFFF

KEY SPECIFICATIONS OF ENTIRE GMS FLEET

Name of Vessel	Propulsion	Standard POB	Leg Length	Variable Load (VDL) Elevated/Jacking	Deck Area	Main Crane Capacity
Kamikaze	Self Propelled	150	67.9m	750t / 450t	650 m ²	36t
Kawawa	Self Propelled	150	67.9m	750t / 450t	650 m ²	45t
Kikuyu	Self Propelled	150	67.9m	750t / 450t	650 m ²	45t
Kudeta	Self Propelled	150	67.9m	750t / 450t	650 m ²	45t
Keloa	Self Propelled	150	67.9m	750t / 450t	650 m ²	45t
Pepper	Self Propelled	150	76.9m	800t - 900t	800 m ²	75t
Shamal	DP2 Self Propelled	150	75m	1,550t / 900t	800 m ²	150t
Scirocco	DP2 Self Propelled	150	75m	1,550t / 900t	800 m ²	150t
Sharqi	DP2 Self Propelled	150	75m	1,550t / 900t	800 m ²	150t
Endurance	DP2 Self Propelled	210	104m	1,855t / 1,855t	1035 m ²	300t
Endeavour	DP2 Self Propelled	246	94.2m	1,650t / 1,650t	1035 m ²	230t
Enterprise	DP2 Self Propelled	194	104m	1,750t / 1,750t	1035 m ²	400t
Evolution	DP2 Self Propelled	150	94.2m	1,700t / 1,700t	667 m ²	200t

COMPARATIVE VESSEL CAPABILITIES

Description of capabilities	GMS Fleet	Jackup Drilling Rigs	Semi-sub/ Construction Vessels	Accommodation Rigs
Construction & Maintenance				
Construction & installation support	✓	×	✓	×
Maintenance support	✓	×	✓	×
Diving support	✓	✓	×	×
Accommodation	✓	×	✓	✓
Remove/decommission topside modules	✓	×	✓	×
Well Servicing & EOR				
Coiled tubing	✓	✓	×	×
Wireline	✓	✓	×	×
Well workover	✓	✓	×	×
Well testing/ early production	✓	✓	×	×
Wind				
Installation	✓	×	✓	×
Maintenance & repair	✓	×	✓	×

GULF MARINE SERVICES PLC



Rest of the World

Office 403, International Tower
24th (Karama) Street
PO Box 46046
Abu Dhabi, UAE
T +971 2 502 8888
F +971 2 555 3421

Saudi Arabia

2nd Floor, Abdullah Fouad Tower
King Fahd Road, Al Khobar
Eastern Province
PO Box 31411, KSA
T +966 13 8064070
F +966 13 8102100

Qatar

41st Floor, Tornado Tower
West Bay Doha
PO Box 6689, Qatar
T +974 429 4892
F +974 429 4913